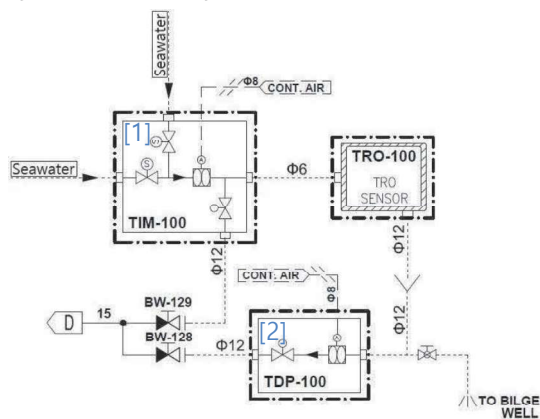
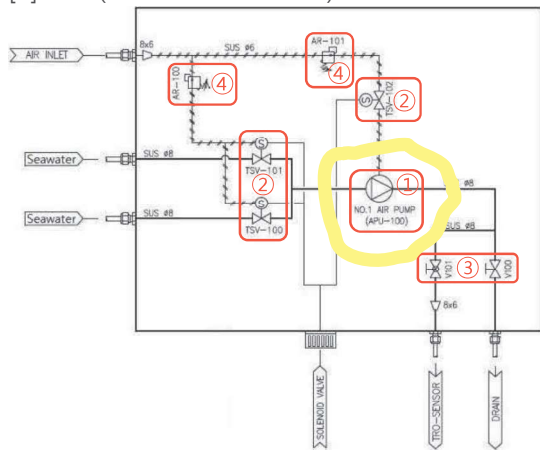


1. Module Combination

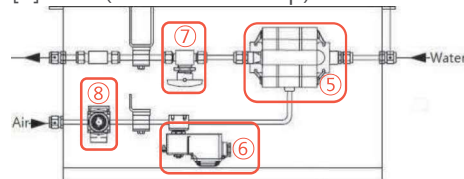
1.1 Type 1 (Module type)



[1] TIM (TRO Intake Module) Detail



[2] TDP (TRO Drain Pump) Detail



No.	Item	Point	Check
①	Sampling pump	Pump running or not	
②	Solenoid valves	Valve on/off working or not	
③	Manual valves	Open	
④	Air filter/regulator	Air pressure about 4.5Bar (Little less pressure than TDP)	
⑤	Drain pump	Pump running or not	
⑥	Solenoid valve	Valve on/off working or not	
⑦	Needle valve	Open	
⑧	Air filter/regulator	Air pressure about 5Bar (Little more pressure than TIM)	