

REV. NO.	DATE	DESCRIPTION	DRAWN BY	CHECKED BY	DESIGNED BY	APPROVED BY
Δ	2013.04.10	INITIAL	H.H			S.P.P

NOTE

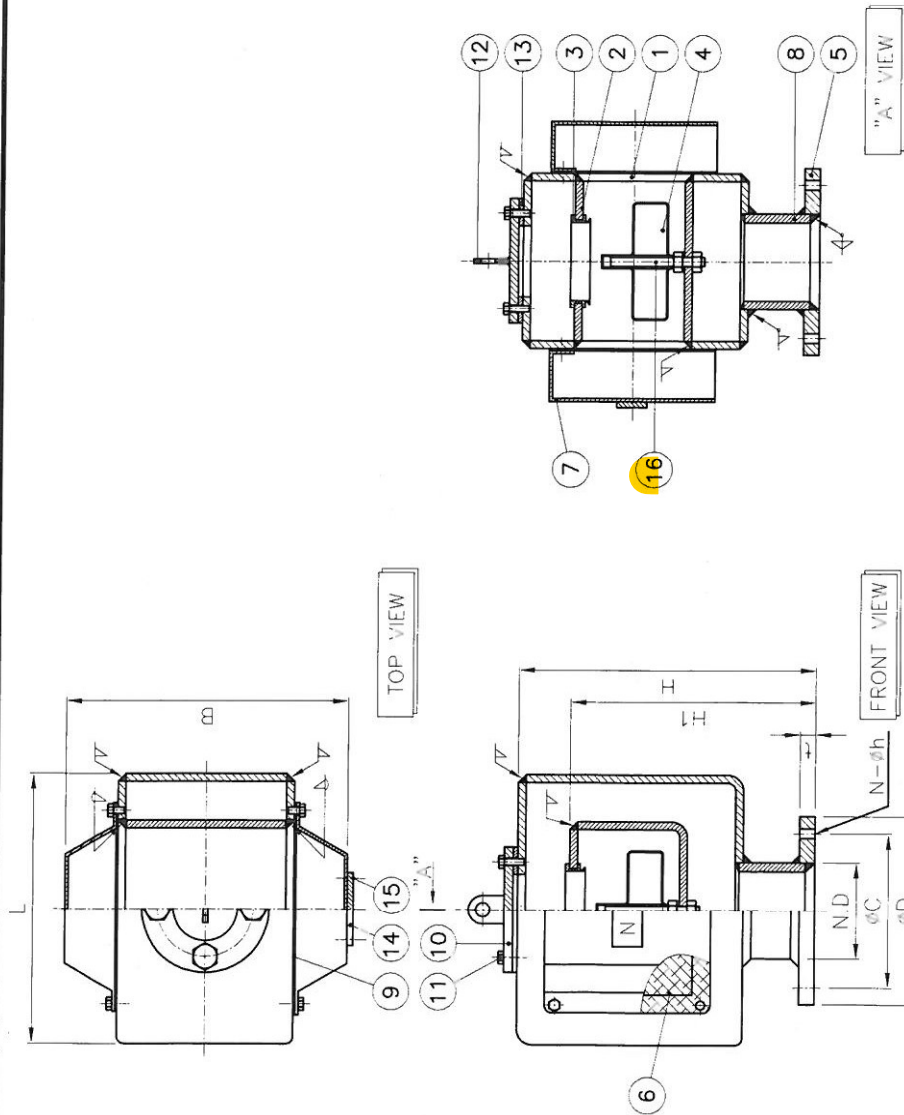
1. FLAME SCREEN WITH WIRE MESH #30 TO BE FITTED FOR OIL & F.W.TANK. (SCREEN COVER CLOSE)
2. STEEL PART : HOT DIP GALV

NO.	DESCRIPTION	MATERIAL	Q'TY	REMARK
10	GUIDE BAR	SUS304	1	
15	SET'G SCREW	SUS304	2	
14	NAME PLATE	SUS304	1	
13	PACKING	NBR	1	
12	LIFTING LUG	SS400	1	
11	HEX. BOLT	SS400	12~30	
10	COVER	SS400	1	
9	SCREEN PLATE	SS400	2	
8	LOWER PIPE	STPG370	1	
7	SIDE COVER	SS400	2	CLOSE
6	SCREEN	SUS304	2	#30
5	SLIP-ON FLANGE	SS400	1	JIS 5K/FF
4	DISC FLOAT	SUS304	1	
3	SEAT	NBR	1	
2	CHAMBER	SS400	1	
1	BODY	SS400	1	

TITLE
BOX TYPE AIR VENT HEAD OF
DISC FLOAT WITH SCREEN (200A~650A)

DATE	DWG. No.	SCALE	REV. No.
2013.04.10	EAAAAC-3-AAA	NONE	Δ

G.S HIGH-TECHER.CO.,LTD.



(UNIT : mm)

N.D	H	H1	B	L	φD	φC	t	N-φh	WEIGHT (kg)	Q'TY
200A	392	314	409	425	320	280	20	8-23	50	-
250A	440	348	514	520	385	345	22	12-23	71	-
300A	557	424	598	588	430	390	22	12-23	86	-
350A	584	452	674	678	480	435	24	12-25	118	-
400A	644	507	767	758	540	495	24	16-25	151	-
450A	695	536	848	840	605	555	24	16-25	182	-
500A	780	600	904	917	655	605	24	20-25	216	-
550A	910	709	1026	1001	720	665	26	20-27	265	-
600A	1010	735	1121	1091	770	715	26	20-27	319	-
650A	1152	891	1248	1229	825	770	26	24-27	372	-